

Radio Control Play Truck

OWNER'S MANUAL — Please read before using this equipment.

With all the engine sounds, you'll think you're driving a real truck!

Your RadioShack Radio Control Play Truck provides hours of fun for children ages three and above. Race it forward or turn it in reverse. Its gear-shift and horn sound just like a real truck!

THE FCC WANTS YOU TO KNOW

Your truck or controller might cause TV or radio interference even when it is operating properly. To determine whether your truck or controller is causing the interference, turn off the truck and release the controller's knob. If the interference goes away, your truck is causing it.

Try to eliminate the interference by:

- moving your truck and controller away from the TV or radio
- contacting your local RadioShack store for help

If you cannot eliminate the interference, the FCC requires that you stop using your truck.

INSTALLING THE BATTERIES

Warning: Dispose of batteries promptly and properly; do not bury or burn them.

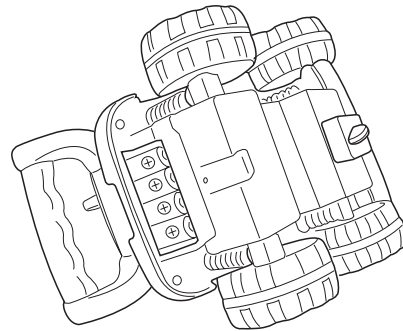
Cautions:

- Use only fresh batteries of the required size and type.

- Do not mix old and new batteries, different types of batteries (standard, alkaline or rechargeable), or rechargeable batteries of different capacities.
- If you do not plan to play with the truck for several days, remove the batteries. Batteries can leak chemicals that can damage electronic parts.

In the Truck

Your Play Truck requires four AA batteries (not supplied) for power. For the best performance and longest life, we recommend RadioShack alkaline batteries.



1. Use a Phillips screwdriver to remove the screw on the truck's battery compartment cover, then press the cover's tab toward the end and lift it.
2. Install four AA batteries in the truck's battery compartment, as indicated by the polarity symbols

 **RadioShack**
www.radioshack.com™

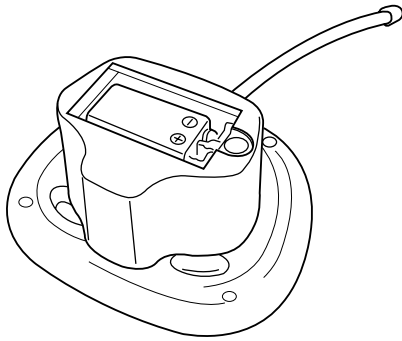
© 2000 RadioShack Corporation. All Rights Reserved.
RadioShack and RadioShack.com are trademarks
used by RadioShack Corporation.

(+ and -) marked inside the compartments.

3. Replace the cover.

In The Controller

Your Play Truck's controller requires one 9V battery (not supplied) for power. For the best performance and longest life, we recommend a RadioShack alkaline battery.

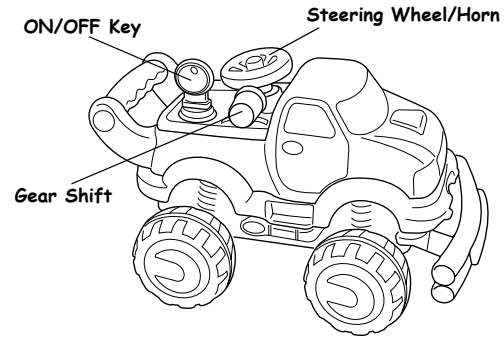


1. Use a Phillips screwdriver to remove the screw in the controller's battery compartment cover, then lift and remove the cover.
2. Install a 9V battery in the controller's battery compartment, as indicated by the polarity symbols (+ and -) marked inside the compartments.
3. Replace the cover.

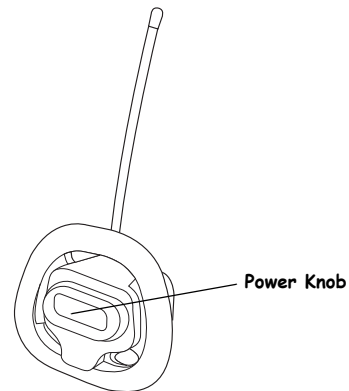
When the truck moves slowly or not at all, replace the batteries in both the controller and the truck.

OPERATION

Warning: Never play with your Radio-Controlled Play Truck in the street.



1. Turn the ON/OFF key on the truck to ON.
2. Place the truck on ground. Hear its realistic idling engine sound.
3. Press down on the controller's power knob. The truck drives forward in a straight line, complete with real engine sounds.



4. Release the power knob to stop the truck.
5. Hold down the power knob again to make the truck turn around.
6. Pull the gear shift down to hear the truck's "revving up" sound. Press the

steering wheel for an electronic horn sound.

7. Turn the truck's key to OFF to turn off the truck.

Note: Your Play Truck stops when it runs into anything, but the motor keeps running. When this happens, hold down or release the controller's power knob so the truck changes direction, or move the truck by hand.

CARE

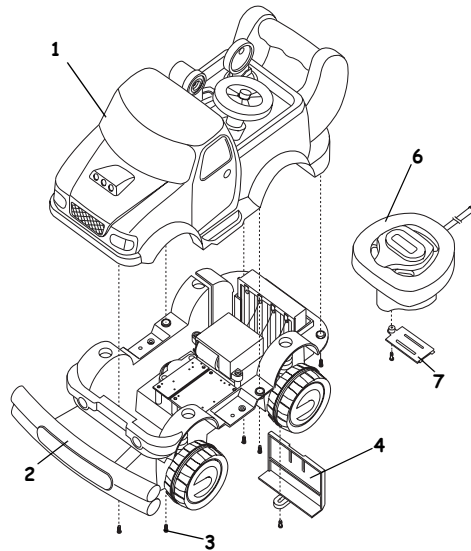
The following suggestions will help you care for your Radio Control Play Truck so you can enjoy it for years.

- Do not drive the truck through puddles or mud, on a wet floor, or in sand, rain, or snow. These can damage it.
- Do not expose the truck or transmitter to temperature extremes, and do not store them in direct sunlight or near a heat source.
- Do not leave the truck or transmitter outside overnight. Night dampness can damage their electronic circuits.
- To protect the truck's mechanisms from lint and hair, do not drive the truck on carpet.
- Wipe the truck and transmitter with a damp cloth occasionally to keep them looking new. Do not use harsh chemicals to clean them.

Modifying or tampering with the truck's or transmitter's internal components can cause a malfunction and might invalidate the truck's warranty and void your FCC authorization to operate it. If your truck is not performing as it should, take it and the transmitter to your local RadioShack store for assistance.

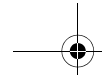
USER-REPLACEABLE PARTS

You can order replacement parts for your Play Truck at your local RadioShack store. Simply identify the part(s) you need from the exploded view, then find the part number in this list.



Ref No.	Item	RSU #
1	Car Body Assembly	12260485
2	Front Bumper	12260493
3	Screw	12260428
4	Receiver Battery Door	12260378
5*	Hale Thread Screw	12260436
6	Transmitter (27MHz)	12260501
7	Transmitter Battery Door	12260386
8*	Owner's Manual	12260477

* Not pictured.



Limited Ninety-Day Warranty

This product is warranted by RadioShack against manufacturing defects in material and workmanship under normal use for ninety (90) days from the date of purchase from RadioShack company-owned stores and authorized RadioShack franchisees and dealers. EXCEPT AS PROVIDED HEREIN, RadioShack MAKES NO EXPRESS WARRANTIES AND ANY IMPLIED WARRANTIES, INCLUDING THOSE OF MERCHANTABILITY AND FITNESS FOR A PARTICULAR PURPOSE, ARE LIMITED IN DURATION TO THE DURATION OF THE WRITTEN LIMITED WARRANTIES CONTAINED HEREIN. EXCEPT AS PROVIDED HEREIN, RadioShack SHALL HAVE NO LIABILITY OR RESPONSIBILITY TO CUSTOMER OR ANY OTHER PERSON OR ENTITY WITH RESPECT TO ANY LIABILITY, LOSS OR DAMAGE CAUSED DIRECTLY OR INDIRECTLY BY USE OR PERFORMANCE OF THE PRODUCT OR ARISING OUT OF ANY BREACH OF THIS WARRANTY, INCLUDING, BUT NOT LIMITED TO, ANY DAMAGES RESULTING FROM INCONVENIENCE, LOSS OF TIME, DATA, PROPERTY, REVENUE, OR PROFIT OR ANY INDIRECT, SPECIAL, INCIDENTAL, OR CONSEQUENTIAL DAMAGES, EVEN IF RadioShack HAS BEEN ADVISED OF THE POSSIBILITY OF SUCH DAMAGES.

Some states do not allow limitations on how long an implied warranty lasts or the exclusion or limitation of incidental or consequential damages, so the above limitations or exclusions may not apply to you.

In the event of a product defect during the warranty period, take the product and the RadioShack sales receipt as proof of purchase date to any RadioShack store. RadioShack will, at its option, unless otherwise provided by law: (a) correct the defect by product repair without charge for parts and labor; (b) replace the product with one of the same or similar design; or (c) refund the purchase price. All replaced parts and products, and products on which a refund is made, become the property of RadioShack. New or reconditioned parts and products may be used in the performance of warranty service. Repaired or replaced parts and products are warranted for the remainder of the original warranty period. You will be charged for repair or replacement of the product made after the expiration of the warranty period.

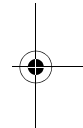
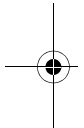
This warranty does not cover: (a) damage or failure caused by or attributable to acts of God, abuse, accident, misuse, improper or abnormal usage, failure to follow instructions, improper installation or maintenance, alteration, lightning or other incidence of excess voltage or current; (b) any repairs other than those provided by a RadioShack Authorized Service Facility; (c) consumables such as fuses or batteries; (d) cosmetic damage; (e) transportation, shipping or insurance costs; or (f) costs of product removal, installation, set-up service adjustment or reinstallation.

This warranty gives you specific legal rights, and you may also have other rights which vary from state to state.

RadioShack Customer Relations, 200 Taylor Street, 6th Floor, Fort Worth, TX 76102

We Service What We Sell

12/99



RadioShack Corporation
Fort Worth, Texas 76102

60-2777
06A00
Printed in Hong Kong

