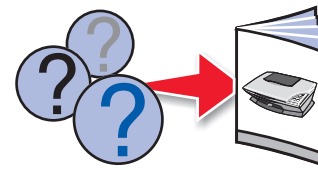


For more help: 1 Refer to your *User's Guide*.

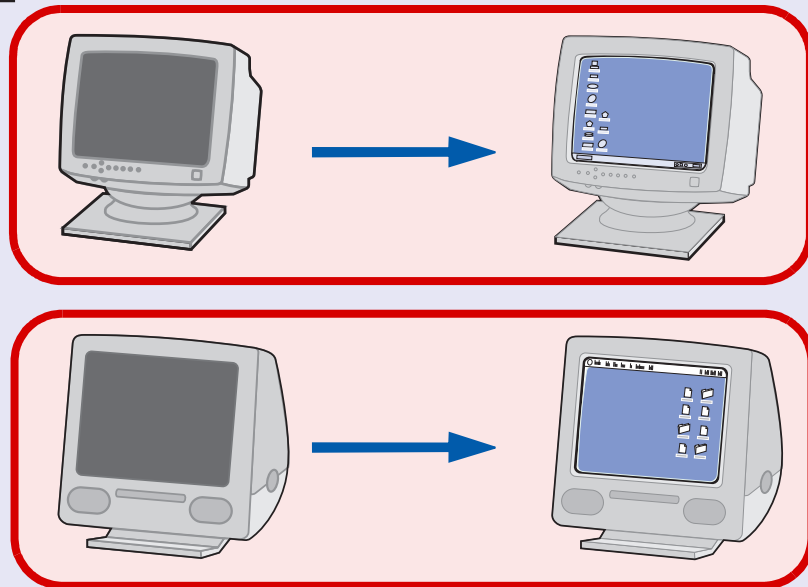
2 Visit our Web site.
<http://support.lexmark.com/>

3 Call us at (407) 563-4600.
Monday - Friday (9:00 AM - 9:00 PM EST)
Saturday (Noon - 6:00 PM EST)

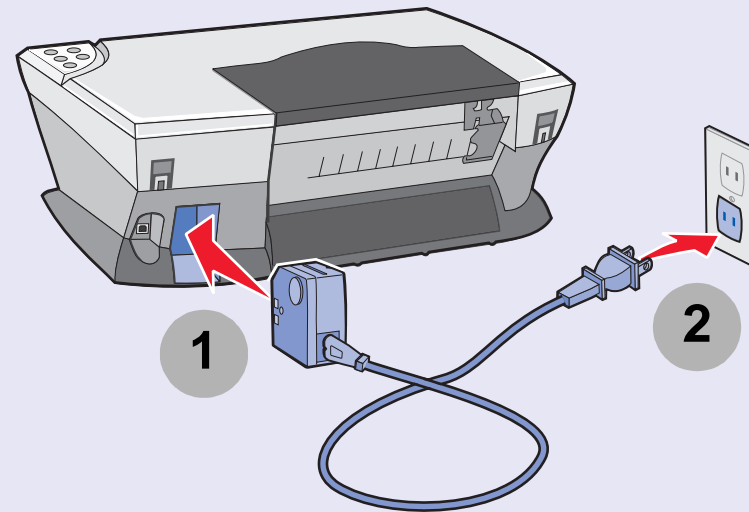
Phone number and support times may change without notice.



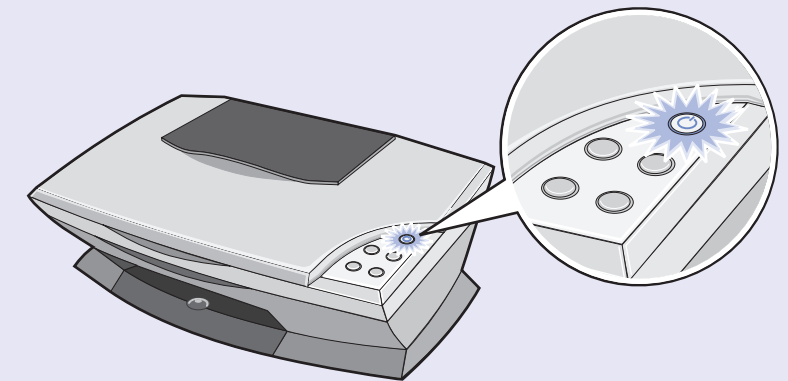
1 Turn your computer on.



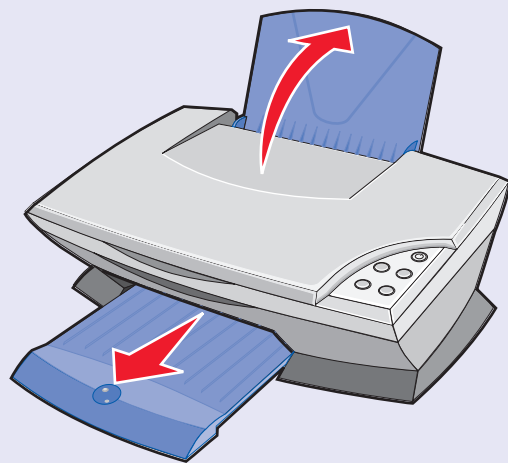
2 Connect the power supply.



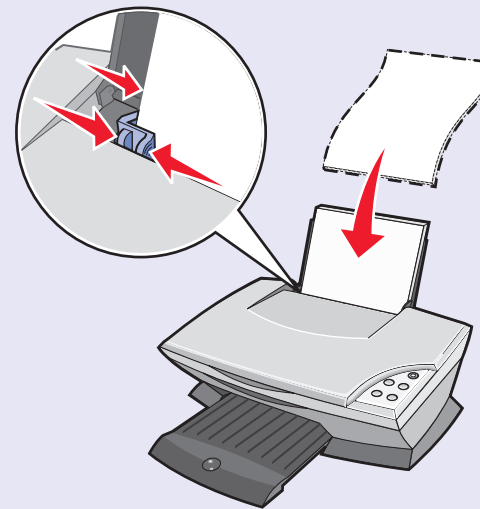
3 Make sure the power light is on.



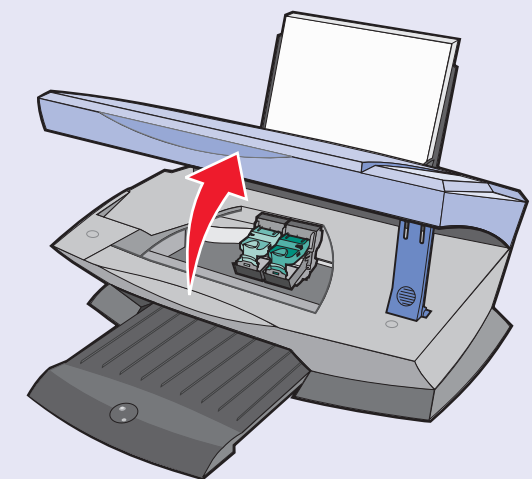
4 Lift the paper support, and extend the paper exit tray.



5 Load paper and adjust the paper guide.



6 Lift the scanner unit.



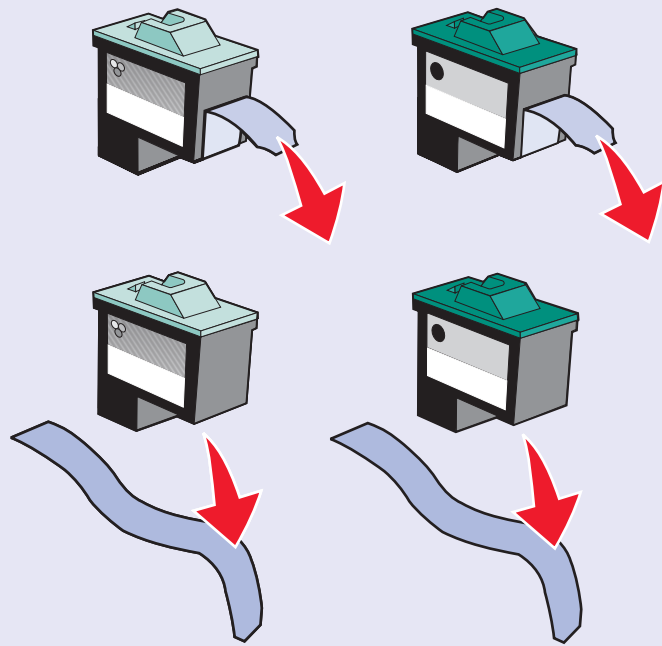
Safety information

- Use only the power supply provided with this product or the manufacturer's authorized replacement power supply.
- Connect the power supply cord to an electrical outlet that is near the product and easily accessible.
- Refer service or repairs, other than those described in the user documentation, to a professional service person.

CAUTION: Do not use the fax feature during a lightning storm. Do not set up this product or make any electrical or cabling connections, such as the power supply cord or telephone, during a lightning storm.

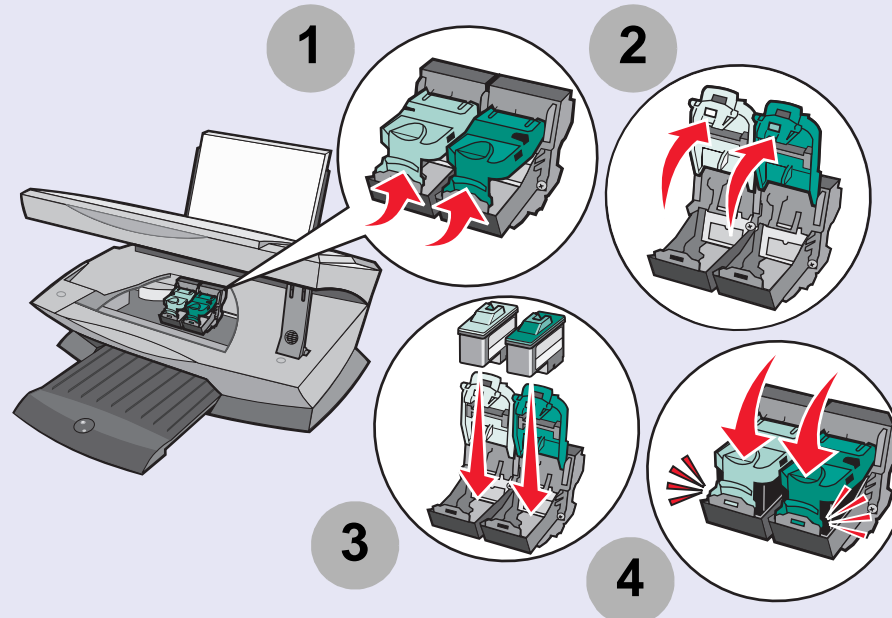


7 Remove the tape.

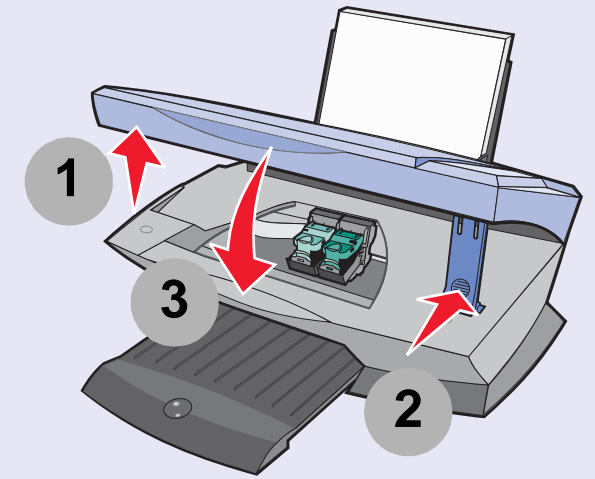


8 Insert the print cartridges.

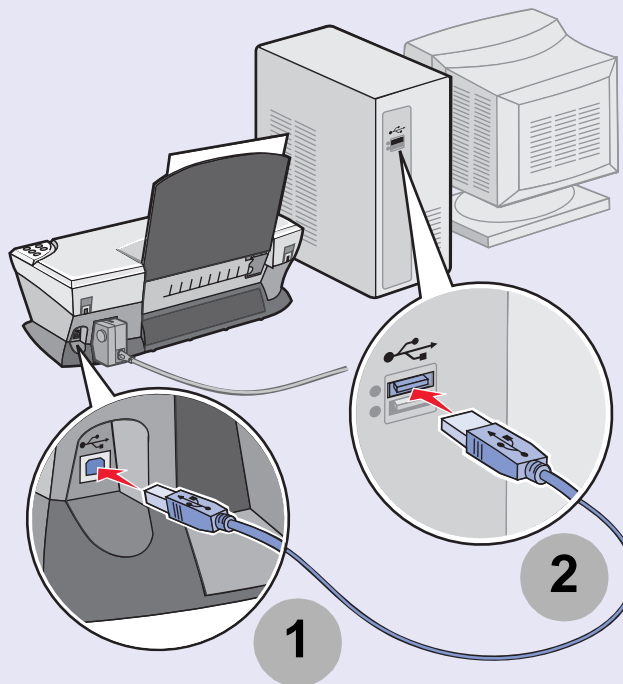
● left
● right



9 Close the scanner unit.

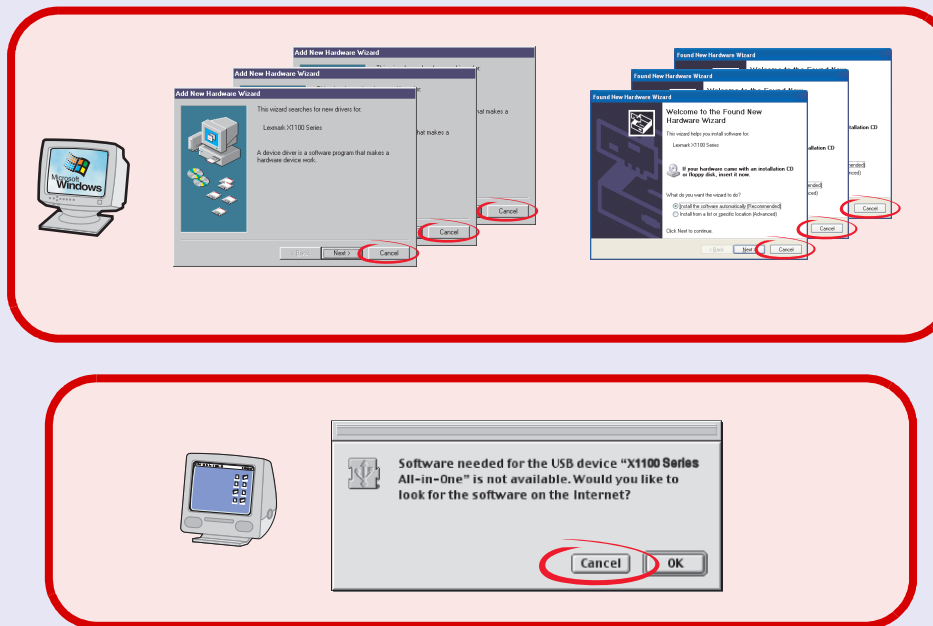


10 Connect the USB cable.

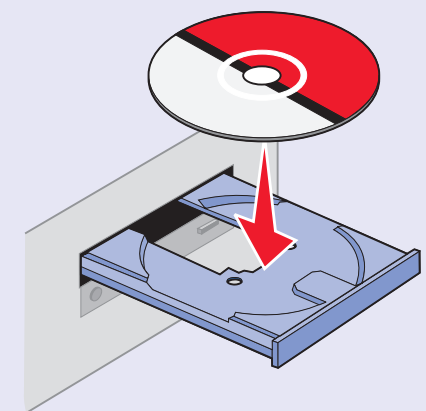


11 **Important!**

Click **Cancel** on *all* Add New Hardware screens.



12 Insert the CD.



Follow the instructions on your computer screen.