

# WHITE PAPER

---

October 2001

Prepared By  
Access Business Group  
Desktop Marketing

Compaq Computer  
Corporation

## CONTENTS

Abstract.....	1
Introduction .....	1
Installation of a C <sup>3</sup> 1000 All-In-One on a new Microsoft Windows XP Home Edition or Professional System .....	2
Upgrade From Windows Me or 98 to XP Home Edition with a C <sup>3</sup> 1000 Already Installed .....	3
Upgrade from Windows 2000 to XP Professional with a C <sup>3</sup> 1000 Already Installed .....	4

## Installation and Upgrade Procedures for the C<sup>3</sup> 1000 All-In-One on the Microsoft Windows XP Operating Systems

### ABSTRACT

*This paper outlines the steps required for installing the Compaq C<sup>3</sup> 1000 All-In-One Multifunction Peripheral on the Microsoft Windows XP operating systems. Installation and upgrade scenarios described include:*

- *Installation of a C<sup>3</sup> 1000 All-In-One on a new Microsoft Windows XP Home Edition or Professional system.*
- *Upgrade of a system from Microsoft Windows 98 or Me to Microsoft Windows XP Home Edition with a C<sup>3</sup> 1000 All-In-One previously installed.*
- *Upgrade of a system from Microsoft Windows 2000 to Microsoft Windows XP Professional with a C<sup>3</sup> 1000 All-In-One previously installed.*

### INTRODUCTION

*Microsoft has recently introduced the Windows XP series of operating systems. While these new operating systems represent a significant step forward in stability and interoperability for the user community, there are some specific actions required to ensure your peripheral devices are compatible with the new operating systems.*

*This white paper describes the steps a user must follow to successfully install their C<sup>3</sup> 1000 on Microsoft Windows XP Home Edition or Professional. In addition to new installations, this white paper also details procedures for upgrading your operating system from Windows 98, Me or 2000 to Windows XP Home Edition or Professional with a C<sup>3</sup> 1000 previously installed..*

*The scope of this white paper is limited specifically to the steps required to make the C<sup>3</sup> 1000 All-In-One function properly under Windows XP. Please refer to your other system or operating system documentation for more information on Windows XP, upgrade procedures and specific system requirements.*



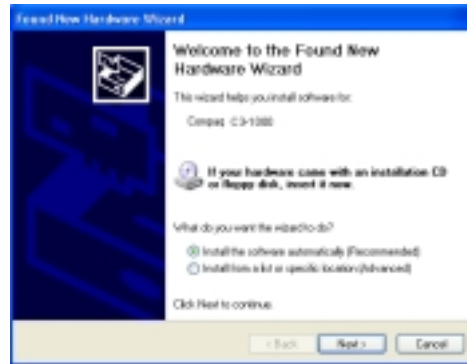
## INSTALLATION OF A C<sup>3</sup> 1000 ALL-IN-ONE ON A NEW MICROSOFT WINDOWS XP HOME EDITION OR PROFESSIONAL SYSTEM

### Quick Steps:

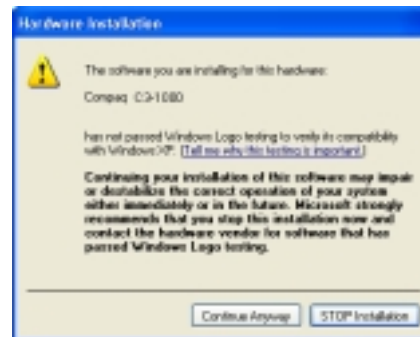
1. Connect the C<sup>3</sup> 1000 to your PC.
2. When Add New Hardware wizard appears press **Cancel**.
3. Insert your C<sup>3</sup> 1000 driver CD (212986-002). The installation should start automatically.
4. When the Windows Logo message appears select **Continue Anyway**.
5. Follow the instructions on your screen to complete the installation.

This situation is no different from the normal installation procedure, and you should follow the steps outlined on the Quick Setup Poster included with the C<sup>3</sup> 1000. The drivers found on the 212986-002 C<sup>3</sup> 1000 driver CD are completely compatible with Windows XP and should be used during the installation. Assuming the paper and cartridges have already been installed and aligned, please follow these steps:

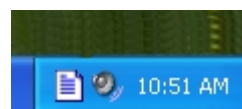
1. Connect power and USB cables to the C<sup>3</sup> 1000
2. On the computer, Windows XP will display the Add New Hardware dialog box as shown below. Press **Cancel**.



3. Insert the 212986-002 driver CD. The installation should start automatically.
4. Follow the instructions on the screen to begin installing the drivers and bundled applications that come with the C<sup>3</sup> 1000.
5. **Note:** the drivers for the C<sup>3</sup> 1000 were developed prior to the release of Windows XP. The C<sup>3</sup> 1000 has been thoroughly tested and is fully compatible with Windows XP. When the following message appears, please select **Continue Anyway** and complete the installation with confidence.



6. At the end of the installation, the computer will be restarted and the C<sup>3</sup> 1000 installation is complete. An icon similar to the one shown below will appear in the system tray and indicates that your PC is in communication with the C<sup>3</sup> 1000. The installation is now complete.



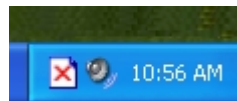
## UPGRADE FROM WINDOWS ME OR 98 TO XP HOME EDITION WITH A C<sup>3</sup> 1000 ALREADY INSTALLED

This scenario assumes that you are upgrading from Windows 98 or Me to Windows XP Home Edition. In this case the C<sup>3</sup> 1000 has already been installed on Windows 98 or Me and the operating system upgrade was begun without first uninstalling the C<sup>3</sup> 1000. The following steps should be completed:

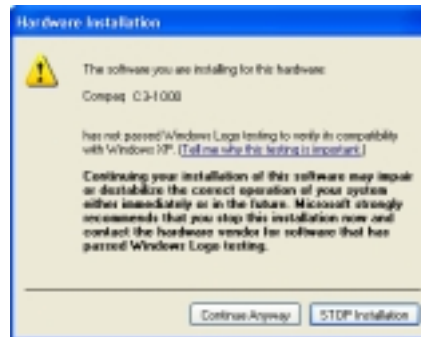
### Quick Steps:

1. After the upgrade to Windows XP has been completed, insert your C<sup>3</sup> 1000 driver CD (212986-002). The installation should start automatically.
2. When the Windows Logo message appears select **Continue Anyway**.
3. Follow the instructions on your screen to complete the installation.

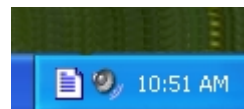
1. After the OS upgrade to Windows XP Home Edition has been completed, an icon similar to the one shown below will appear in the system tray and indicates that the PC can not communicate with the C<sup>3</sup> 1000.



2. At this point the drivers for the C<sup>3</sup> 1000 need to be upgraded to a version which fully supports Windows XP. It is not necessary to uninstall the drivers or unplug the power or USB cables from the C<sup>3</sup> 1000 before performing the upgrade.
3. Insert the 212986-002 C<sup>3</sup> 1000 driver CD. The installation should start automatically.
4. Follow the instructions on the screen to begin installing the drivers and bundled applications that come with the C<sup>3</sup> 1000.
5. **Note:** the drivers for the C<sup>3</sup> 1000 were developed prior to the release of Windows XP. The C<sup>3</sup> 1000 has been thoroughly tested and is fully compatible with Windows XP. When the following message appears, please select **Continue Anyway** and complete the installation with confidence.



6. At the end of the installation, the computer will be restarted and the C<sup>3</sup> 1000 installation is complete. An icon similar to the one shown below appears in the system tray and indicates that your PC is in communication with the C<sup>3</sup> 1000. The installation is now complete.



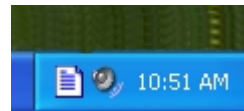
## UPGRADE FROM WINDOWS 2000 TO XP PROFESSIONAL WITH A C<sup>3</sup> 1000 ALREADY INSTALLED

This scenario assumes that you are upgrading from Windows 2000 to Windows XP Professional. In this case the C<sup>3</sup> 1000 has already been installed on Windows 2000 and the operating system upgrade was begun without first uninstalling the C<sup>3</sup> 1000. The Windows 2000 drivers are completely compatible with Windows XP Professional, and no additional steps should be required.

### **Quick Steps:**

1. After the upgrade to Windows XP has been completed, check the icon in the system tray to ensure your PC is communicating with the C<sup>3</sup> 1000.
2. No action is required for upgrading from Windows 2000 to Windows XP.

1. After the OS upgrade to Windows XP Professional has been completed, an icon similar to the one shown below appears in the system tray and indicates that your PC is in communication with the C<sup>3</sup> 1000.



2. The C<sup>3</sup> 1000 is already completely installed and is fully functional under Windows XP Professional. The installation is now complete.

## Notice

The information in this publication is subject to change without notice.

**COMPAQ COMPUTER CORPORATION SHALL NOT BE LIABLE FOR TECHNICAL OR EDITORIAL ERRORS OR OMISSIONS CONTAINED HEREIN, NOR FOR INCIDENTAL OR CONSEQUENTIAL DAMAGES RESULTING FROM THE FURNISHING, PERFORMANCE, OR USE OF THIS MATERIAL.**

This publication does not constitute an endorsement of the product or products that were tested. The configuration or configurations tested or described may or may not be the only available solution. This test is not a determination of product quality or correctness, nor does it ensure compliance with any federal, state or local requirements. Compaq does not warrant products other than its own strictly as stated in Compaq product warranties.

Compaq and the names of Compaq products referenced herein are either trademarks and/or service marks or registered trademarks and/or service marks of Compaq.

Microsoft, Windows, Windows XP, are either trademarks or registered trademarks of Microsoft Corporation.

Other product and company names mentioned herein may be trademarks and/or service marks of their respective owners.

©2001 Compaq Computer Corporation. All rights reserved. Printed in the U.S.A.

## Installation and Upgrade Procedures for the C<sup>3</sup> 1000 All-In-One on the Microsoft Windows XP Operating Systems

North America First Edition (October 2001)